

RECEIVED
LARAMIE COUNTY
CHEYENNE, WY.

'86 OCT 14 AM 11 52

CERTIFIED LAND CORNER RECORDATION

DESCRIPTION OF CORNER EVIDENCE FOUND, AND ORIGINAL RECORD (if known)

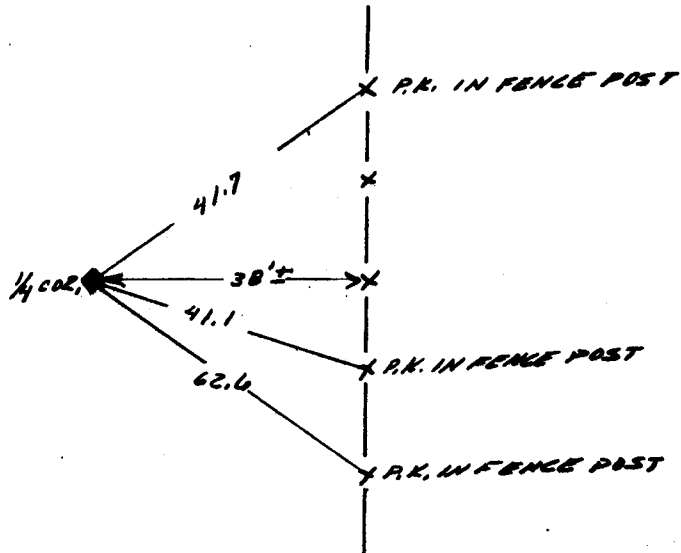
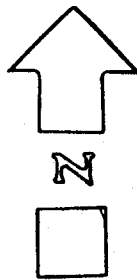
T 15N
1/4 3 & 2
R 67W

FOUND: 4" x 10" SANDSTONE PROJECTING 6" ABOVE GROUND FIRMLY SET WITH 1/4" PLAINLY MARKED ON WEST FACE.

DESCRIPTION OF MONUMENT AND ACCESSORIES ESTABLISHED TO PERPETUATE THE ORIGINAL LOCATION OF THIS CORNER:

SEE TIES BELOW

SKETCH, WITH COURSE AND DISTANCE TO ADJACENT CORNER IF DETERMINED IN THIS SURVEY. (May Sketch or Paste Reproduction on Reverse Side.)



I, JOHN A. STEIN certify that I have carefully performed or reviewed the work done on the diagrammed corner as reported on this recordation form and approve the same.

John A. Stein
Signature of Surveyor

4,500
Registration No.

STATE OF WYOMING,

Office of Clerk and Recorder,

County of Laramie

This "corner record" was filed for record on the 14 day of Oct, 1986, was noted on the cross-index plat and is assigned page No. _____, in book No. _____

Joseph C. Whitcomb
County Official

Cross Index No.	<u>C-17</u>	T.	<u>15</u>	R.	<u>67</u>	Mer.
		T.		R.		Mer.
		T.		R.		Mer.
		T.		R.		Mer.
		T.		R.		Mer.
		T.		R.		Mer.
		T.		R.		Mer.